

# SmartBidet

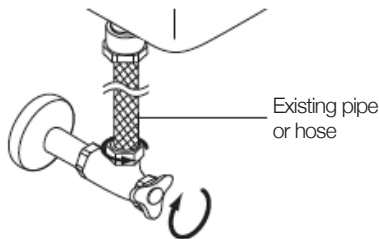
**Model: SB-3000**

## Quick Installation Guide

### ⚠ CAUTION BEFORE INSTALLATION

- This product requires 120V usage.
- Please do not plug in the electrical cord prior to installation.
- Please consult with a licensed electrician if electrical work is needed.  
In case a grounded outlet is not available, grounding should be done in order to prevent short circuits or electric shock.

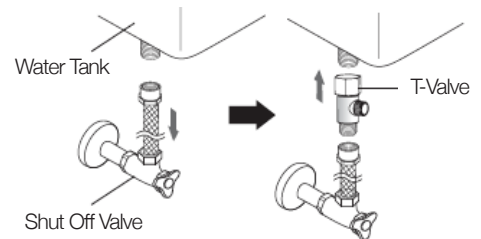
#### ❶ Shut off water.



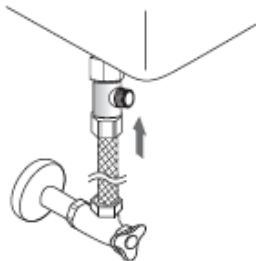
#### ❷ Removing existing seat.



#### ❸ Connect T-Valve directly under toilet tank. NOTE: DO NOT CONNECT T-VALVE TO WATER SUPPLY VALVE AS INDICATED ON PAGES 15, 16 IN THE MANUAL.



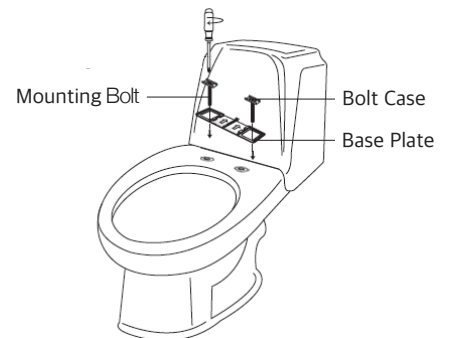
#### ❹ Connect the metal hose to the T-valve and water supply valve. Tighten. NOTE: The end of the hose's diameter is 3/8". Please check if your water supply valve's diameter is the same. All bathrooms water supply valves are not the same. If it is not, please purchase an adaptor that fits at your local hardware store.



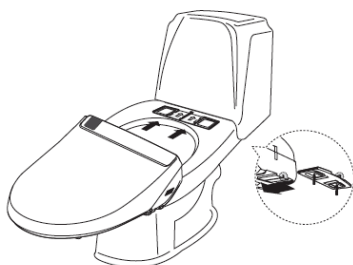
#### ❺ Place the rubber nuts into the fixing holes of the toilet.



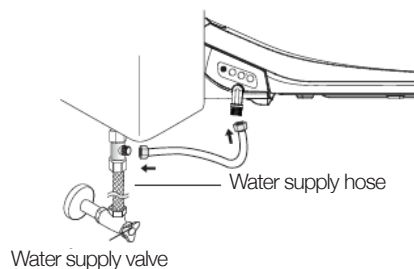
#### ❻ Place the bolt cases onto the baseplate then place the mounting bolts through the bolt cases. Screw bolts into rubber nuts with a screwdriver and tighten.



#### ❼ Slide the SmartBidet onto the baseplate until you hear a loud "Click" sound.



#### ❽ Connect the plastic tube from the side of T-Valve to the side of the SmartBidet and tighten. Turn on the water supply and watch for any leaks.



#### ❾ Wireless remote mounting guide.

